

Resilient Element	Part Number	Load Rating (lbs.)	Max Transmissibility
VHDS Silicone	CMA-S00	0.9 — 1.2	4
	CMA-S01	1.2 — 2	4
	CMA-S02	2 — 4.5	4
	CMA-S03	4.5 — 7	4
	CMA-S04	7 — 10	4
	CMA-S05	10 — 15	4
Neoprene	CMA-N01	1.2 — 2	10
	CMA-N02	2 — 4.5	10
	CMA-N03	4.5 — 7	10
	CMA-N04	7 — 10	10
	CMA-N05	10 — 15	10

Table 1: Performance Characteristics

Materials:

- Metal Parts: Aluminum
- Resilient Element: See Left

Operating Temperature:

- Silicone: -60°F to 300°F
- Neoprene: -20°F to 180°F

Natural Frequency:

- 12 to 20 Hz

Axial/Radial Frequency Ratio:

- 1 : 1 Approximately

Weight:

- 2.0 oz.

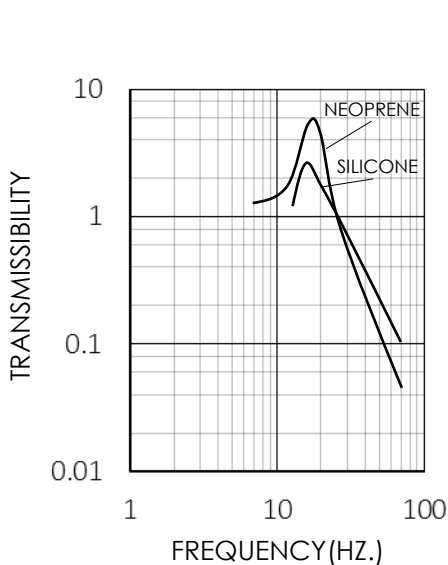


Figure 1: Transmissibility Curve

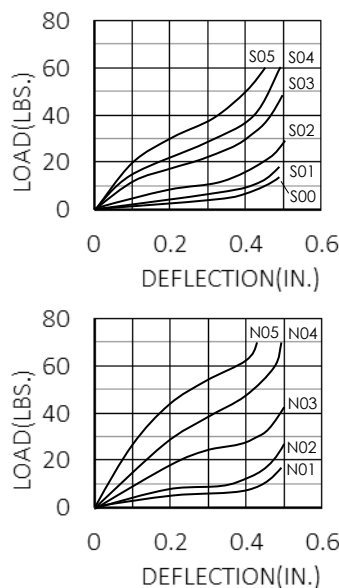


Figure 2: Load Vs. Deflection

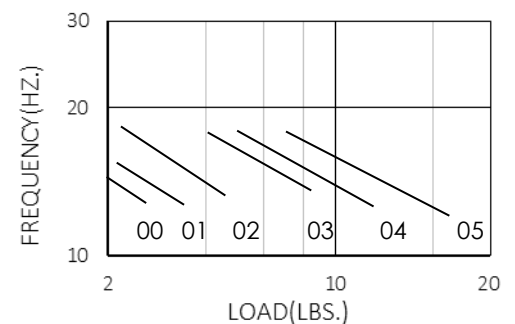


Figure 3: Load Vs. Frequency
For Neoprene & Silicone