

Part Number	Load Rating (lbs.)		Max Transmissibility
	Vehicular	Stationary	
CUP42-[ ]01[ ]	15 — 30	15 — 50	VHDS Silicone: 4 Neoprene: 10
CUP42-[ ]02[ ]	30 — 50	30 — 100	
CUP42-[ ]03[ ]	50 — 80	50 — 150	
CUP42-[ ]04[ ]	80 — 105	150 — 250	

**Table 1: Performance Characteristics**

Basic Model Number:	Resilient element	Load	Center Hole:	Metal Parts:
CUP42	S: Silicone N: Neoprene R: Natural Rubber C: Chlorobutyl	See Table 1	C: Tapped 3/8-16 UNC-2B F: Tapped 3/8-24 UNF-2B M: 8mm L: Thru Hole Ø0.390	S: Steel, Zinc plated A: Aluminum

**Table 2: Possible Isolator Options**

Example: CUP42-S01CS

Silicone rubber, steel body, tapped 3/8-16 with lowest load rating

**Materials:**

- Metal Parts: Aluminum or Steel
- Resilient Element: See Left

**Operating Temperature:**

- Silicone: -60°F to 300°F
- Neoprene: -20°F to 180°F

**Natural Frequency:**

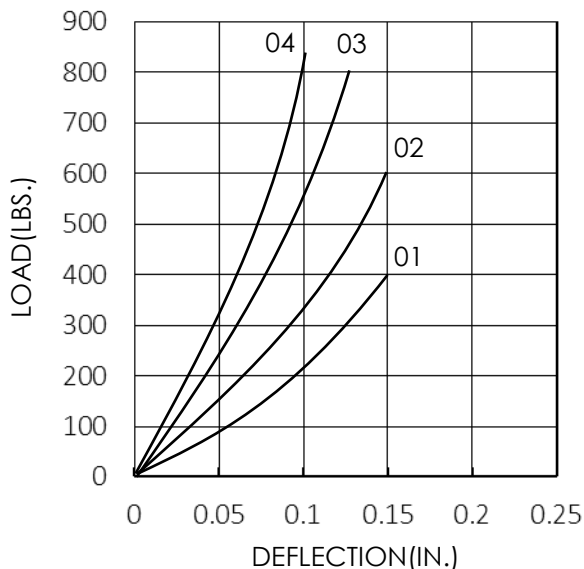
- 20 to 45 Hz

**Axial/Radial Frequency Ratio:**

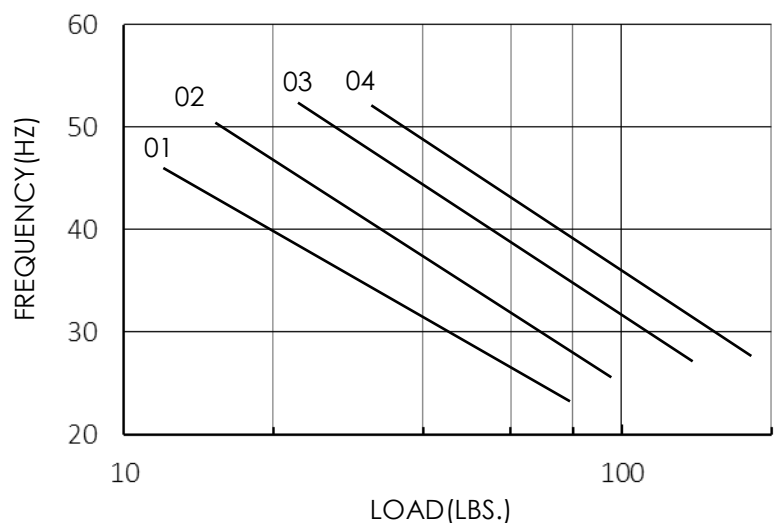
- 1.1 : 1 Approximately

**Weight:**

- Steel: 1.0 lb
- Aluminum: 7.0 oz



**Figure 1: Load Vs. Deflection**



**Figure 2: Load Vs. Frequency**